

CHRONICLES

NEWS AND INFORMATION FOR ALL ONBOARD EVENTS



SILVER WIND

FRIDAY,
17 FEBRUARY 2023

SHIP CRUISING

CAPE HORN, CHILE

Approx Arrival: 9:00

Departure: 9:30

TODAY'S WEATHER

Partly Cloudy

High: 10°C / 50°F

Low: 8°C / 46°F

CAPE HORN, CHILE

In the past, no two words conjured up more fear to sailors than Cape Horn. With its reputation of ferocious storms and mountainous seas it was a place where a seafarer garnered respect for bravery against the odds. That is, if he lived to tell the tale (he also got to wear a gold hoop ear-ring and dine with one foot up on the table).

The Cape itself is the rugged insular tip of South America that projects into the storm-swept Drake Passage. The Dutch sailor Willem Schouten and merchant Jacob Le Maire, both from the town of Hoorn (hence Cape Horn), put it on the map in 1616 when attempting to circumvent the trade monopoly exercised by the Dutch East India Company over the Straits of Magellan.

Once an unavoidable physical gateway to adventure and commerce in the Pacific Ocean, Cape Horn nowadays

has more of a spiritual attraction, drawing intrepid travellers to pay homage to the brave sailors who, by necessity, attempted to pass this wild and inhospitable headland.

During clear weather, when the island is free from the frequent icy squalls that batter its shores, a 7-metres (23 feet) high steel monument can be seen standing about 1.5 kilometres (1 mile) away from the true cape, near the Chilean navy station. It depicts the silhouette of an albatross, a bird that is said to carry the souls of those sailors who perished "rounding the Horn". With that in mind, consider yourself lucky to confront the Horn on a luxury Expedition cruise ship rather than from the wave-washed and perilous deck of a windjammer.

PRIOR TO YOUR DEPARTURE

SILVERSEA VOYAGE

Prize Points Exchange

Many activities on this voyage have been awarded prize points for achievement. Please note that these points are valid on board this ship only, and you may now redeem them for prizes. If you wish to redeem your points during a future Silversea voyage, please exchange them for a points certificate. Please exchange your prize points this evening at the Reception Lobby (6) from 15:15 to 15:45.



Express Checkout

Avoid queuing on the morning of disembarkation by registering your credit card at the Reception Desk (6). You will then receive your receipt and final statement in your suite. If you are uncertain whether you have already registered your credit card, kindly check with Reception by dialling 800.

Evaluation Forms

Silversea is dedicated to ensuring high standards of guest services, therefore we kindly ask you to take a moment to complete the evaluation form delivered to your suite and to return it to the Reception Desk (6). We value your opinion and look forward to reading your comments.

LA TERRAZZA

ON BOARD SILVER WIND

▶ DECK 7

On board this luxury cruise ship, a divine selection of Italy's best cuisine is served à la carte in La Terrazza. Authentic recipes and the freshest ingredients come together with flair and passion — a flavourful expression of Silversea's distinctive Italian heritage. La Terrazza uses buffalo mozzarella from Naples, organic balsamic vinegar and olive oil from Umbria, and air-dried ham out of Parma. The Emilia-Romagna region also produces Silversea's 24-month aged Parmigiano Reggiano, while the pasta is made fresh daily onboard the *Silver Wind*.



DEEP SEA DETOX

TODAY'S SPA SPECIAL

▶ THE ZÀGARA BEAUTY SPA, DECK 9

Don't go home without experiencing the rejuvenating benefits of algae. Our special detoxifying massage treatment will pamper you for 1 hour and 25 minutes and will ease the tension away from your muscles for up to five weeks. Today only enjoy 15% savings on your Deep Sea Detox treatment. Immersed in tradition and authenticity, the Zàgara spa journey stimulates all of the senses — touch, smell, sight, taste and sound.

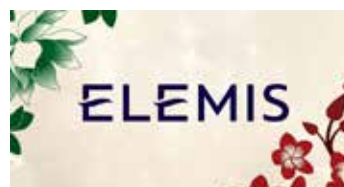


ELEMIS FRANGIPANI

EXPERIENCE THE EXOTIC

▶ THE ZÀGARA BEAUTY SPA, DECK 9

Conditioning Hair and Scalp Ritual Style Dry. This tantalizing ritual includes massaging our precious Monoi Oil into your hair and scalp to ease away stress and leave hair super shiny. Finish off with a style dry to complete the look! 60 minutes.



CLOSE ENCOUNTERS OF A THRILLING KIND

Come face-to-face with a giant tortoise. Snorkel with penguins and dive with sea lions. Reclaim your feeling of wonder as you hike across ancient lava tunnels and back to the beginning of time. Ever since Darwin explored the Galápagos, The Enchanted Islands have remained one of life's great adventures. Even more enchanting aboard *Silver Origin*.

Save up to 10% on selected sailings if you book today on board.



▶ For more information, please contact your Future Cruise Manager, Barrie on Deck 6, or extension 8871.

 SILVERSEA®

EXPEDITIONS

THE ART OF GIFTING



▶ THE BOUTIQUE, DECK 5

Today is your last chance to make purchases in the Boutique, remember that our prices are all tax free. Our sales professionals are eager to help you find the perfect gift for anyone. Come and see us, we will be delighted to help you find the perfect memento of your travels.

INTERNET ACCESS



Enjoy free Wi-Fi throughout your stay. Once connected to the Silversea Guest Wi-Fi network, launch your Internet browser and type gosilversea.com

FRIDAY, 17 FEBRUARY 2023

SUNRISE 6:24 • SUNSET 19:59

PASSPORT DISTRIBUTION FOR ALL GUESTS

Please collect your passports today at the Reception Desk starting from 15:00 onwards.

GOOD MORNING

7:30	Morning Stretching	Fitness Centre (9)
8:30	Today's Silver Quiz, Crossword Puzzle and Sudoku are available (return the Silver Quiz to Reception by 15:00 - prize points for the most accurate quiz that is returned earliest)	Panorama Lounge (8)
9:00	We hope to view Cape Horn, Chile	
9:00	Enrichment Lecture with Jonathan Chester Sir Earnest Shackleton and the Endurance Expedition: Of all the best know explorers of the Heroic Era, Shackleton's increasing popularity is perhaps the most enigmatic as he failed at every one of his expedition's geographic objectives and died at a young age. His most famous failure, the 1914-18 Endurance Expedition was also ironically his crowning achievement.	The Show Lounge (6)
9:00	Wildlife Watch (until 12:00, weather dependent)	Deck 8 and 9
9:30	Boutique's Special: last chance shopping experience. Save up to 50% off on selected clothing, jewellery, cosmetics and more. Use any of your remaining onboard credit on purchases this morning.	The Boutique (5)
10:00	Workshop - Walking Through Antarctica's Heroic Era hosted by Jonathan Chester & Dr. Phillip Mayes Silver Wind photo collection walking tour. Find the foremost photographers of the Heroic Era, Herbert Ponting, and Frank Hurley decorate throughout the ship with iconic photographs. The images were crafted on Scott's ill-fated, 1910/1911 British National Antarctic Expedition aboard the Terra Nova and Shackleton's epic Imperial Trans Antarctic Expedition 1911-14 aboard the Endurance. Join us to explore the ship and find out about its displayed history. (Please sign up at the Expedition Desk)	Reception Lobby (5)
10:00	Crazy Golf: come to the front of The Show Lounge for a game of Crazy Golf to win prize points with your Entertainment Host Daniel.	The Show Lounge (6)
11:00	Enrichment Lecture with George Cowan Whale I Never: Whales sing the most beautiful songs, jump into the air like the finest acrobats and grow to the most incredible sizes. Well, join George as he ignores all of this and instead dive deep with him into the disgusting world of what comes from whales.	The Show Lounge (6)
11:00	Fitness Seminar: Burn Fat Fast	Fitness Centre (9)

GOOD AFTERNOON

14:00	Enrichment Lecture with Natalie Long Albatross – Stories of Success: Did you know 15 species of albatross are considered endangered? This lecture runs through 4 inspiring conservation success stories that have improved the wellbeing of albatross worldwide and have played a critical role in saving the species from the brink. These stories highlight the incredible conservation work happening around the world and illustrate that simple changes that can make a big difference.	The Show Lounge (6)
14:00	Wildlife Watch (until 17:00, weather dependent)	Deck 8 and 9
15:00	Workshop - Birding 101 hosted by Natalie & Sara We will take a look at the basics of birding and bird identification. We will examine field guides and other resources, and learn the "tricks of the trade." And, of course we will immediately apply our newly acquired skills in a hands-on session on deck. Don't forget to bring your binoculars and any field guides you might have with you. (Please sign up at the Expedition Desk)	The Show Lounge (6)
15:00	Passport Distribution Please collect your passports today at the Reception Desk.	Reception Desk (6)
15:00	Complimentary Footprint Analysis	Fitness Centre (9)
15:15	Prize Point Redemption with Entertainment Host Daniel (until 15:45) You can redeem your points for prizes, if you would like to hold onto the prize points we can also issue a certificate to use on your next Silversea voyage.	Reception Lobby (6)
16:00	Enrichment Lecture with Sara Catella Will Geo-engineering Save The Poles And The Planet? Sara will talk about geo-engineering known also as a climate engineering and how these controversial projects are trying to save our polar regions and in particular Antarctica. She will explain what geo-engineering is and will present some of the more significant projects that have been studying to save the Thwaite glacier and some of the most creative ones to save our polar regions.	The Show Lounge (6)
16:00	Pure Form Pilates	Fitness Centre (9)
17:00	Aerobics Class	Fitness Centre (9)

GOOD EVENING – DRESS CODE: CASUAL

18:00	Final Recap & Voyage Movie Showcase with your Expedition Team Join the Expedition Team for the final Recap & Voyage Movie Showcase on our previous activities. Followed by Chart Auction.	The Show Lounge (6)
18:15	Guitarist Tomás performing beautiful pre-dinner tunes	Dolce Vita (5)
18:30	Piano music provided by Alfredo to accompany your pre-dinner cocktails	Panorama Lounge (8)
21:00	Join Tomás your resident guitarist/vocalist for some after dinner evening music	Dolce Vita (5)
21:30	Piano Bar favourites and requests performed by Alfredo to accompany your after dinner drinks	Panorama Lounge (8)



ALL DAY DINING

BREAKFAST

ROOM SERVICE

6:00 — 9:00

PANORAMA LOUNGE (DECK 8)

Early Riser 6:30 — 10:00

THE RESTAURANT (DECK 4)

À la Carte 8:00 — Last Seating 9:30

LA TERRAZZA (DECK 7)

Buffet 7:30 — Last Seating 10:00

PANORAMA LOUNGE (DECK 8)

Bouillon 11:00 — 12:00

LUNCH

THE RESTAURANT (DECK 4)

À la Carte 12:00 — Last Seating 14:00

LA TERRAZZA (DECK 7)

Buffet 12:00 — Last Seating 14:00

THE GRILL (DECK 8) **

12:00 — Last Seating 14:00

TEATIME

LA TERRAZZA (DECK 7)

16:00 — 17:00

ALL AROUND DINING

24-hour

Available from the All Around Dining Menu in your suite. To place your order please contact your butler or call extension 8815. All Around Dining is also available in other public areas when our dining venues are not open for service.

DINNER

As a courtesy to your fellow guests please respect the times of your dinner reservation.

THE RESTAURANT (DECK 4)

À la Carte 19:00 — Last Seating 21:30

LA TERRAZZA (DECK 7) *

À la Carte 19:00 — Last Seating 21:30

HOT ROCKS (DECK 8) */**

À la Carte 19:00 — Last Seating 21:30

LA DAME (DECK 4) *

À la Carte 19:00 — Last Seating 21:00

A dining fee per person applies.

Should you wish to cancel your reservation at La Dame, please note that you must do so by latest 14:00 on the day of the reservation, otherwise the full cover fee, per person, will be billed to your Guest Account.

** For dinner reservations, please dial 8810 during dining hours.*

Reservations recommended

*** Weather permitting*

BAR HOURS

9:00 – 22:00	Pool Bar ** (Deck 8)
10:00 – 20:30	Panorama Lounge (Deck 8)
10:00 – 20:30	The Humidor (Deck 8)
18:00 – until late	Dolce Vita (Deck 5)
21:30 – until late	Panorama Lounge (Deck 8)
21:30 – until late	The Humidor (Deck 8)

At Silversea Cruises, we take maximum food precautionary measures to ensure the safest quality product is offered to our guests; Worldwide Public Health Services advise that consuming raw or undercooked meats, seafood, shellfish, eggs, milk, or poultry may increase your risk of food-borne illness, especially if you have certain medical conditions.

VIEW YOUR EXPENSES

Kindly note that your on board expenses can be reviewed anytime on the interactive TV system in your suite. A printed copy of the final statement will be delivered to your suite on the morning of your disembarkation.

SERVICES

POOL AND JACUZZI* | DECK 8

8:00 – 19:00

**Weather permitting*

ZÀGARA SPA | DECK 9

BEAUTY SALON AND BARBER SHOP

Dial 8824 for appointments.

8:00 – 20:00*

**Later appointments until 22:00
available on request.*

FITNESS CENTRE* | DECK 9

7:00 – 20:00

**Limited spaces available for classes.*

**Age restriction: over 18 to use the
facilities. 16–18 allowed in with guardian.*

SAUNA & STEAM ROOM DECK 9

8:00 – 12:30 | 14:30 – 19:30

FUTURE CRUISE MANAGER

DECK 6

9:00 – 12:00 | 14:00 – 19:00

Please dial 8871 to arrange a private appointment or consult your suite ITV to request an appointment.

EXPEDITION DESK | DECK 6

Dial 8805 for assistance.

9:00 – 12:00 | 14:00 – 17:00

Please note that during Expedition Activities the desk will not be staffed.

GUEST RELATIONS MANAGER

DECK 6

Dial 800 for assistance.

8:00 – 12:00 | 16:00 – 19:00

BOUTIQUES | DECK 5

Dial 8831 or 8832 for assistance.

9:30 – 12:00

Toiletries and other essential items are available for purchase upon request in the Boutique or through your Butler.

PHOTO STUDIO | DECK 5

18:00 – 20:00

Use Mac and Windows computers with Photoshop and Lightroom at the Photo Studio. Photo printers and photo-retail are also available

MEDICAL CENTRE* | DECK 3

Dial 2151 during clinic hours.

8:00 – 9:00 | 17:00 – 18:00

Dial 8800 (Reception) after hours.

Medical assistance available 24 hours.

**Kindly inquire for charges prior
to consultation.*

**IN THE EVENT OF AN
EMERGENCY PLEASE DIAL 911**